



COURSE INFO BRIEF

Data Analytics with PowerBI

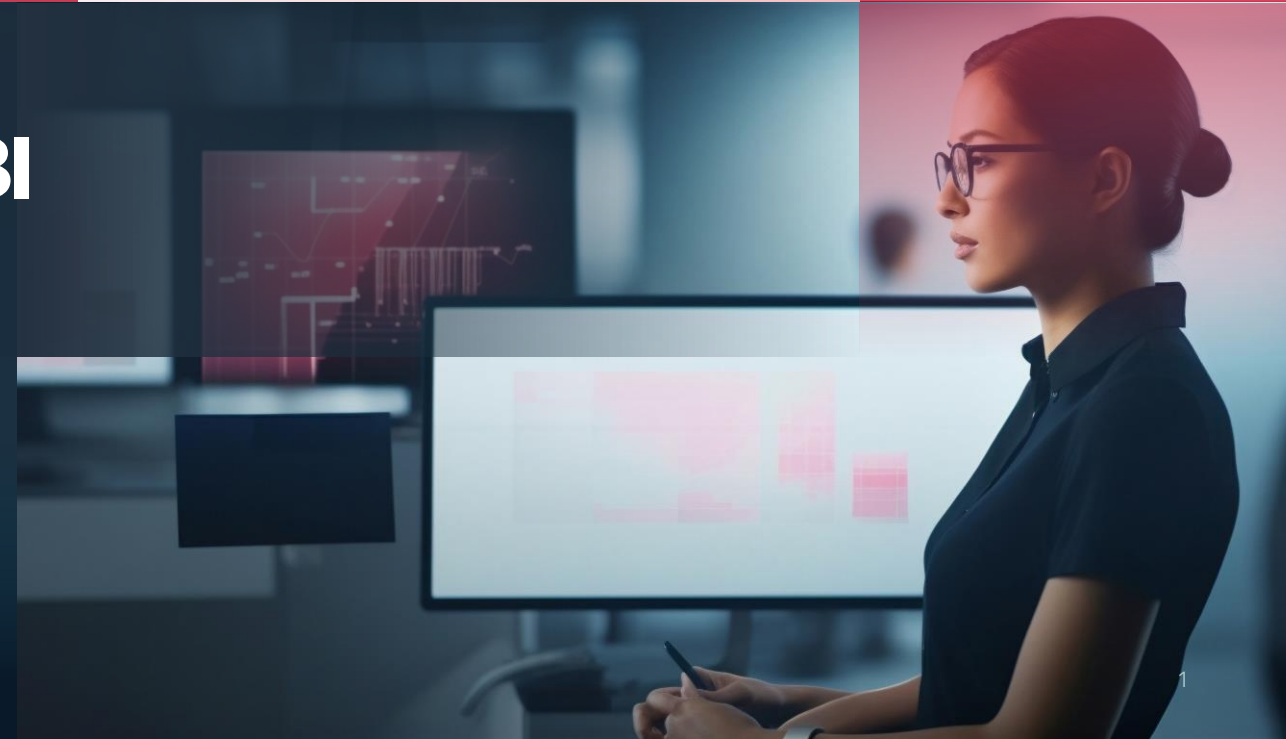
Turning data into real-time business insights.

PRICE
\$820

DURATION
2-Days

LEVEL
Open Entry

DELIVERY
In-Class



About this course

Power BI is a business analytics service by Microsoft. It aims to provide interactive visualizations and business intelligence capabilities with an interface simple enough for end users to create their own reports and dashboards.

This course provides participants with the knowledge and skills to work with and analyse data and work with business cases using Microsoft Power BI. This course will allow participants to use Power BI Desktop to connect to various data sources, shape the data, and use data models to create reports. Through this Power BI course, participants can learn that Power BI Desktop centralizes, simplifies, and streamlines what can otherwise be a scattered, disconnected, and arduous process of designing and creating business intelligence repositories and reports.

+ Who is this course for

Aimed at anyone who wants to create professional dashboards and reports for their organization as well as to analyse data and derive insights.

What are the key takeaways...

Design interactive visualizations using business intelligence to gather actionable insights.

Use DAX queries to build time intelligence reports, slice reports by measures and filter according to context.

Gain through real world case studies, the knowledge and skills to analyze data.

Pull data from various sources, clean, transform and model it to answer specific business questions.

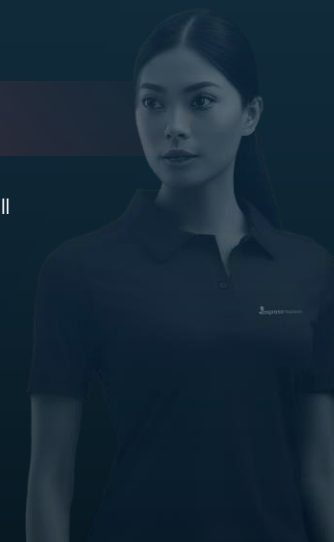
+ Prerequisites

- No prior PowerBI experience is required to take this course.
- Having of some basic knowledge of Excel. charts and graphs would be an added advantage for you.
- All equipment for the course will be provided by Impress Training.

In-House

For In-house corporate clients, we will customise all exercises & examples based on your submitted content, brand guidelines, and specified topics of interest.

A full breakdown or proposal of this course is available upon request.



Day 1

Introduction to Power BI

PowerBI is a tool which is widely used for data visualizations, storytelling and analytics. This module takes you through the journey of how it all began and what constitutes analytics and business intelligence along with the strength of how PowerBI bridges the gap between users and business insights.

- Power BI Service, Power BI desktop & Power BI Mobile.
- Introduction to Data Sources.
- What Data Sources can be used with PowerBI.

Working with Data and defining a business case

Before using any tool for data visualization and analytics, it is important to be data literate, understand the nature of the data, what the data consists of and also defining the format of the data to make it suitable for analytics. Along with the above, we need to ensure that the business case is well defined.

- Understanding the data you import
- Understanding and defining the business problem
- Creating tables of data to use in PowerBI
- Ensuring the data format is useful for analytics

Working with Filters

While working with data and visualizations, it is very important to be able to narrow down what you see to make information easier to decipher.

Filtering is an operation which helps you do that. This section deals with all possible and right ways to apply filters to data.

- Creating a Slicer, Visual Field filters, Top N Filters, and adding page level filters

Power BI Desktop

This module introduces Microsoft PowerBI Desktop and how it can be used to make data ready for further visualization and analytics. Preparing the data is a pivotal part of any data analytics lifecycle.

- Connecting to a data source
- Building a data model
- Setting the properties of data
- Loading Table Relationships
- Creating and Deleting Relationships
- Using Query Editor

Visualizations & Formatting

In this module, we will first understand what are the different types of possible visualizations, how each visualization can be formatted aesthetically and business insights that could potentially be obtained from each type of chart/graph. It is important to understand what each visualization signifies in order to make the right choice while building a report/dashboard.

- Creating and working with Visualizations
- Creating Bar Charts, Column Charts, Line Charts and other visualizations
- Formatting Axes
- Formatting Data Labels, Titles & Data Colours, Backgrounds and Borders
- Aligning visualizations, Choosing the right size for a visual
- Understanding Focus Mode



Day 2

Advanced Visualizations

There could be cases where users would require plotting multiple dimensions in a visualization. For such cases we would need to look towards more advanced visualizations. This module covers some of those visualizations and how one can choose the right visualization when needs to be plotted.

- Create Map Based Visualizations
- Create a Gauge and Tree Map Visualizations
- Importing Custom Visualizations
- How do you choose the right visualization?

Understanding Visual Interactions

For business users, different visualizations need to have a controlled behaviour when certain actions are done on the report or other visualizations. This module walks through the different types of visual interactions available and used.

- Type and use of Visual Interactions across visualizations

Reports in PowerBI

In order to present our findings, we need to put everything together to form meaningful visualizations which can give us valid and important business insights. This section deals with how we can put various visualizations together to form a report.

- Creating a report
- Adding Multiple Pages to your Reports
- Building a narrative in your report
- Adding Shapes, Images & Text Boxes to reports

Q&A and Quick Insights

There are some additional features provided in PowerBI which can make the process of building a report faster. In this section we discuss some of these new features and how they can be used.

- Using Natural Language Queries to make Visualizations
- Create a Visual using Q&A
- Understanding and using Quick Insights

PowerBI Service and PowerBI Mobile

Once a report has been locally built, it's important to make it available to other people and share it. Also, making it portable is one of the key factors of today. This section will deal with how reports can be made readily available to various users. • Understanding PowerBI Service.

- Publishing reports to PowerBI Service
- Accessing and sharing reports
- Installing the PowerBI mobile app
- Exploring the features of the PowerBI mobile app

Create your report in one hour: Viz-a-thon

After going through how you can create a report on PowerBI utilizing the basic features and business knowledge, it's time to put it to the test! Working through a business case, and working in groups, we will try to come up with an apt report from the data, working through the different options PowerBI has to offer.



About the Trainer

Pranav is an accomplished academic and corporate trainer in the field of data science, business intelligence and automation. With over 7 years of professional experience, Pranav has worked in and trained professionals from Financial Services, FMCG, Marketing, Software Development & Business Management. Passionate about technology, he has been involved in the developing digital solutions for analytics, operations and AI.

“

A very good course for beginners and yet providing a good overview of the possibilities of Power BI

William Chan, Deputy Director

Thank you so much! I've learned a lot!

Sean Lim, Senior Manager

”



For more information:

Impress Training Pte Ltd.

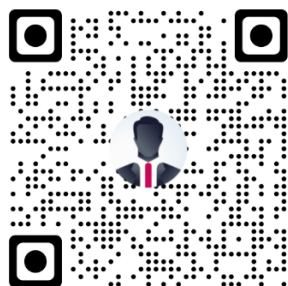
8 Burn Road,
#04-11/12, Trivex,
Singapore 369977

T. (+65) 6636 9772

M. (+65) 9850 9058

E. mail@impresstraining.com

W. impresstraining.com



Follow us on Instagram



Like us on Facebook



Watch us on YouTube